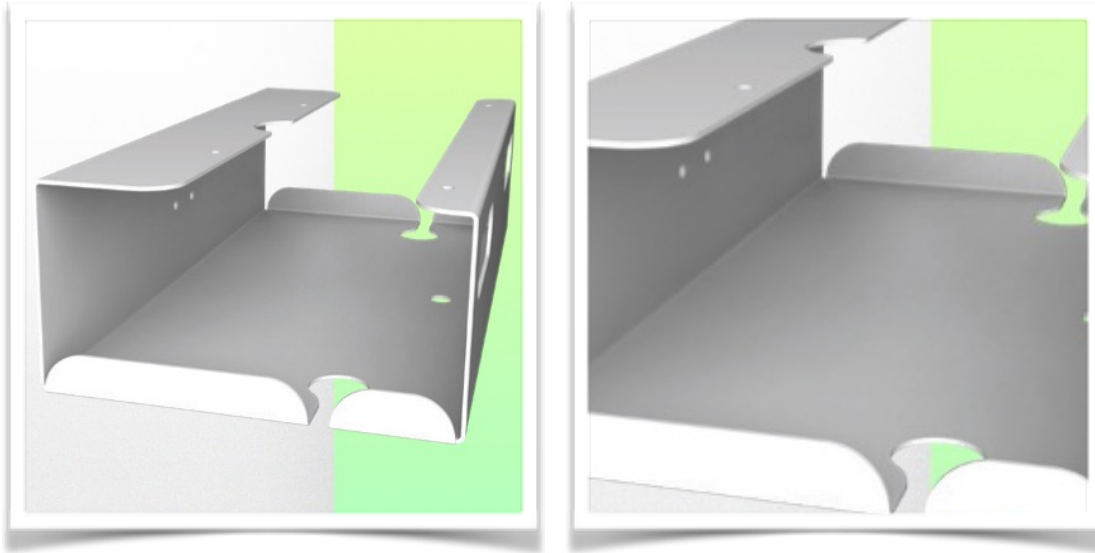




Bracket for power supply unit 395 x 203 x 105 mm



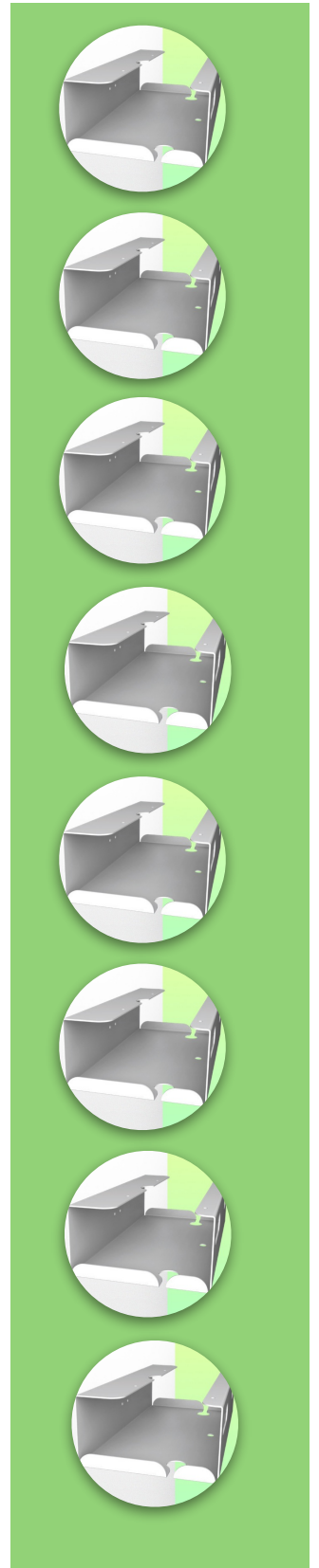
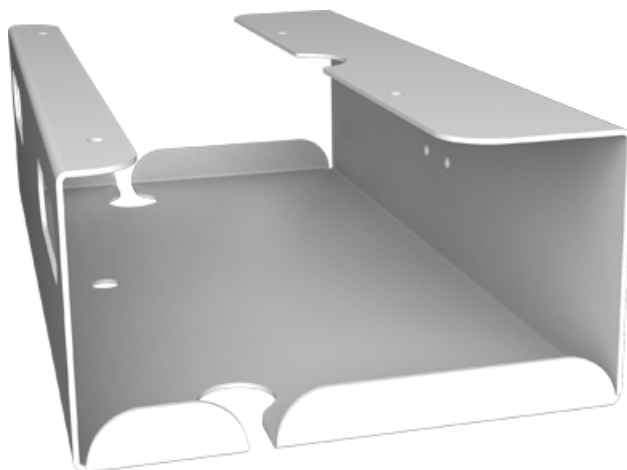
Room for cable storage



Easy to clean

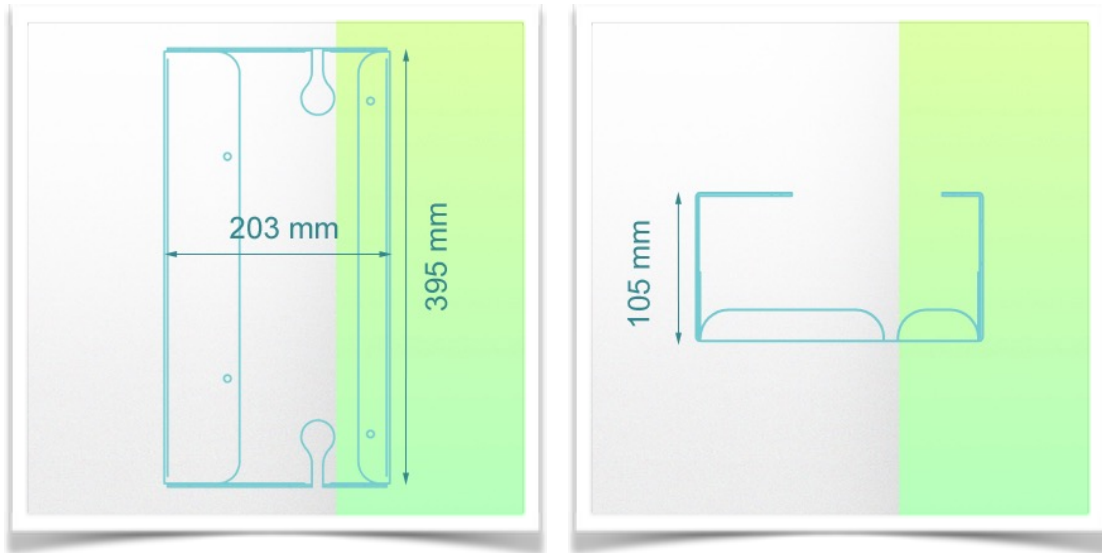


Installation on all WorkiMed Medical Cart Range





Bracket for power supply unit 395 x 203 x 105 mm



**Mechanical data**

Internal Dimension 395 x 203 x 105 mm

**Construction**

Material: Mild Steel

**Color**

RAL 9016 White / Aluminium

