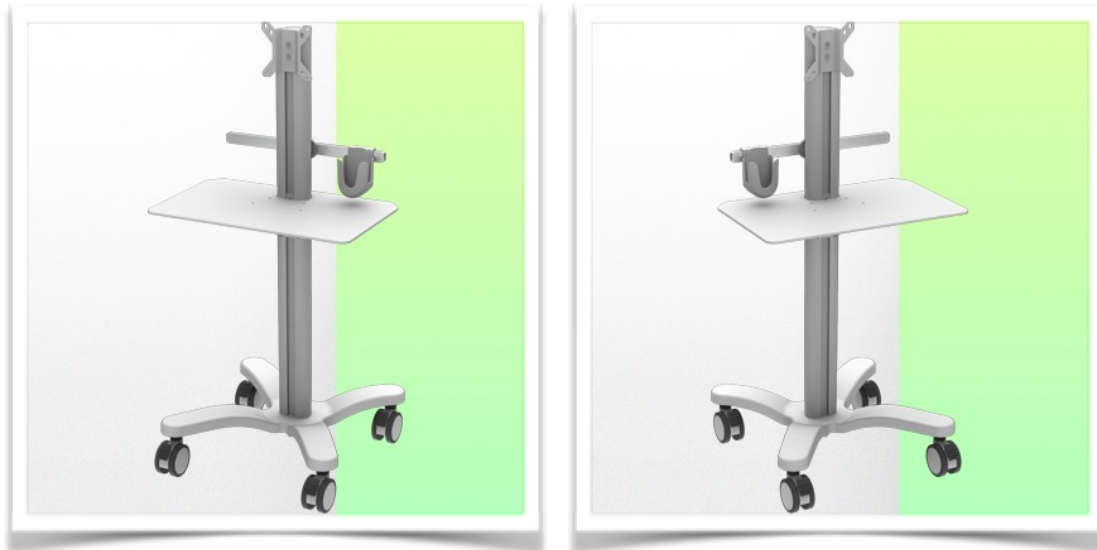


WorkiMed Light Cart for Screen



This new ergonomically designed medical cart is ideal for computer monitors up to 26".

The screen attachment bracket is VESA 75/100 mm. Equipped with a comfortable work surface of L 490 mm x 300 mm for medication preparation. A 400 mm long din rail is attached to the rear of the monitor, allowing for the addition of other accessories. A mouse holder for the din rail is also included, which frees up the work surface for a keyboard.

Its lightweight and robust aluminium construction allows the new WorkiMed Light Cart to be moved around the screen without strain.

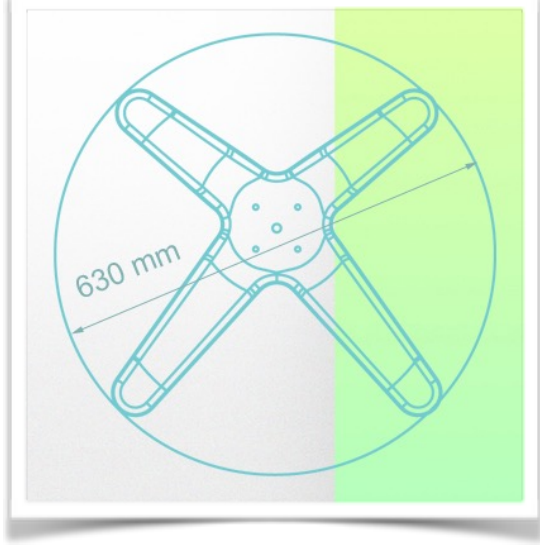
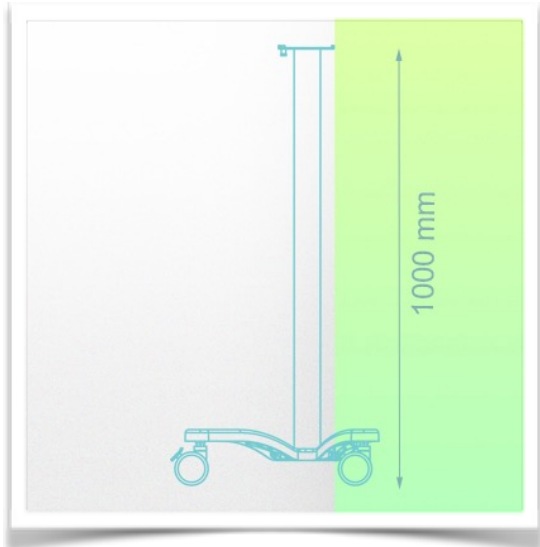
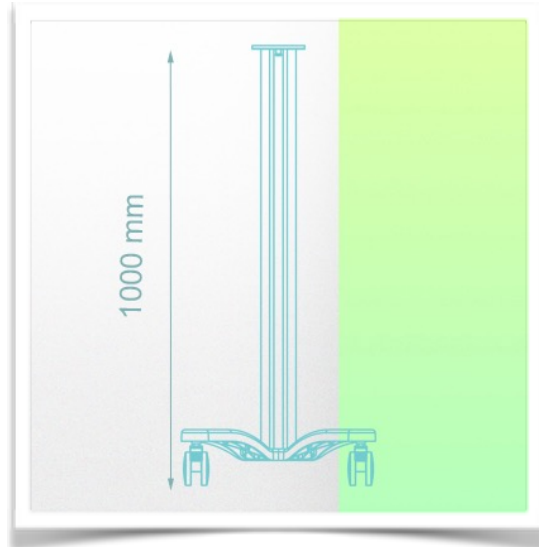
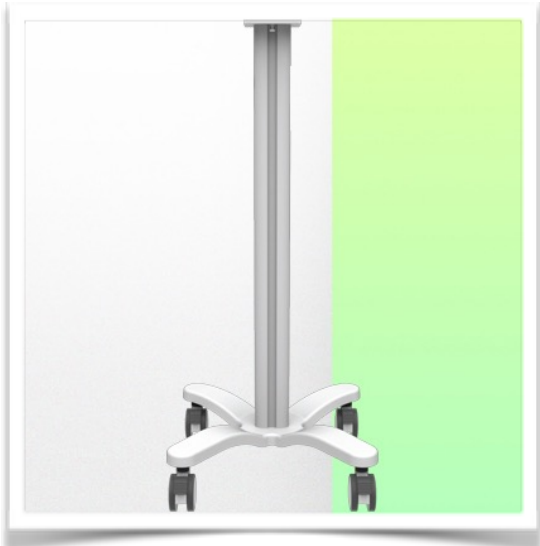
An open architecture provides access points throughout the surface, making it easy to connect devices.

The minimal footprint is also an advantage, with a base diameter of only 630mm, allowing it to be moved even in tight spaces in the hospital.

The WorkiMed Light Cart for screens complies with hospital hygiene standards and can be disinfected down to the last detail, including the wheels, with no rough edges in its design for complete and easy cleaning, contributing to infection control.

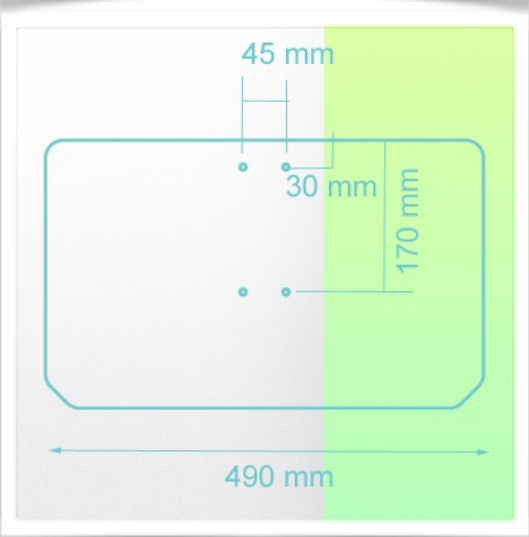
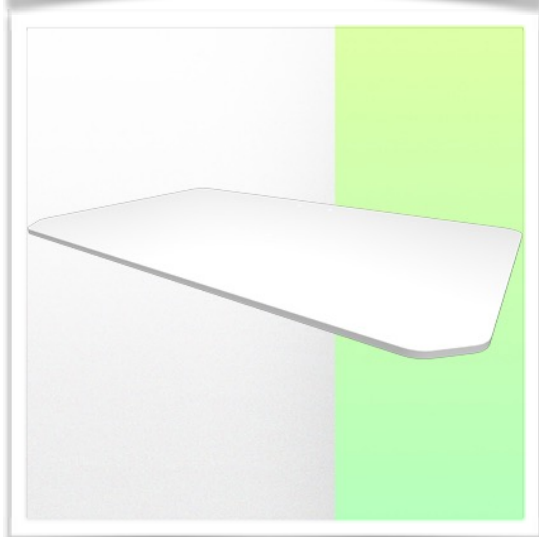
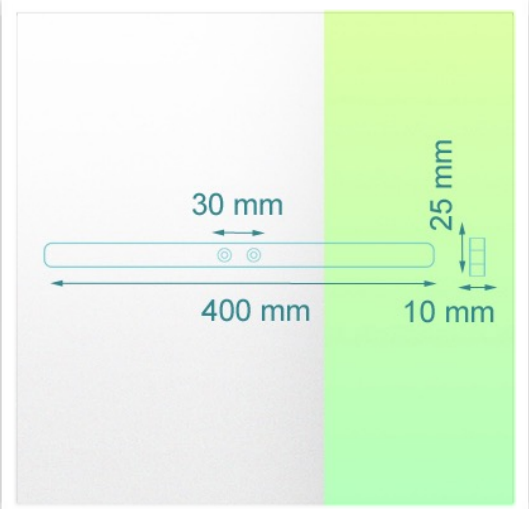


WorkiMed Light Cart for Screen





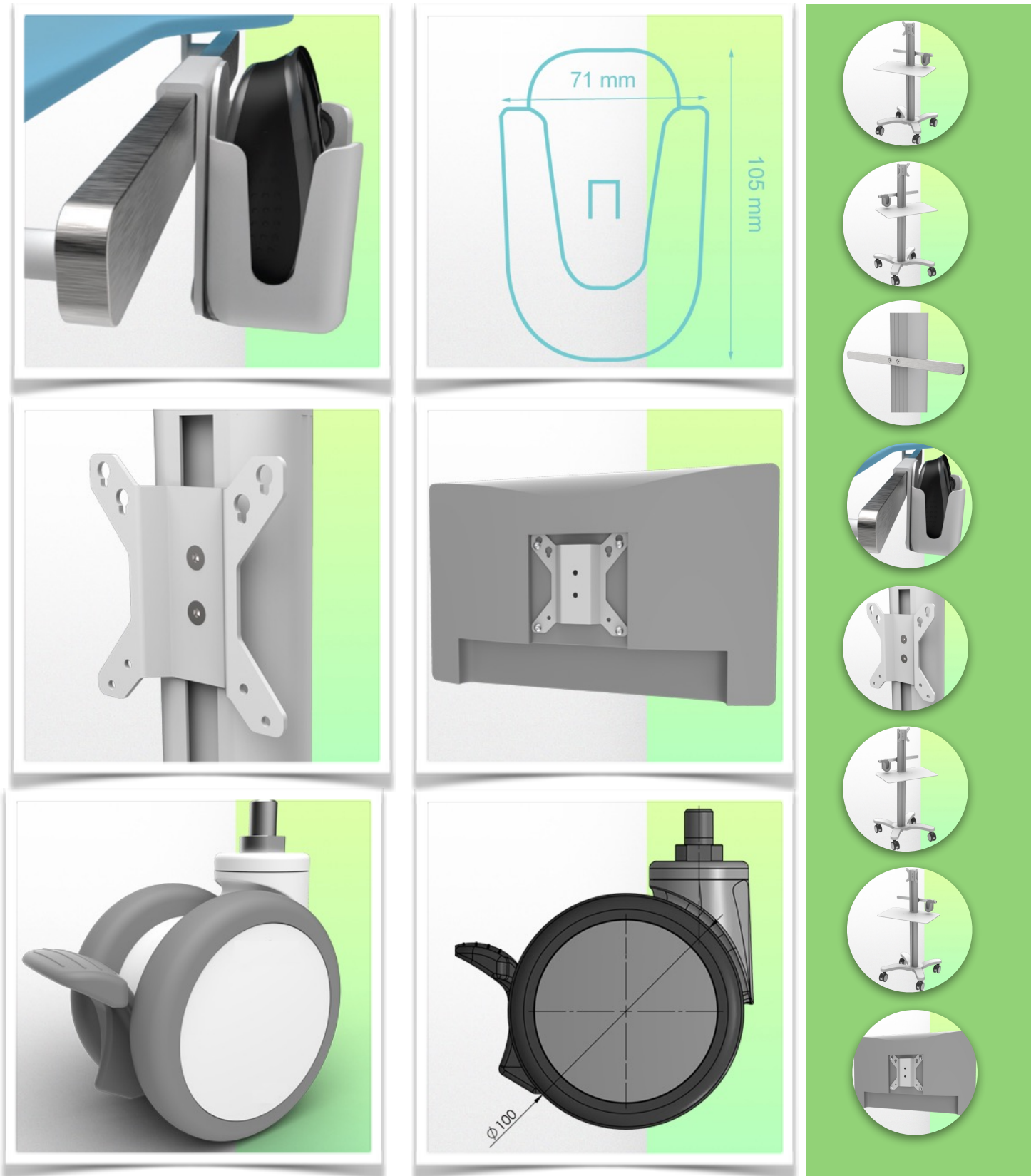
WorkiMed Light Cart for Screen



Presentation

Part Number: WM 555.119

WorkiMed Light Cart for Screen



WorkiMed Light Cart for Screen

Technical specifications:

- * * Height of column with base: 1000 mm
 - * Work surface W490 x D300 mm
 - * Din rail support 400 mm
 - * Mouse support for Din Rail
 - * Wheel construction: Polyamide with polyurethane tread.
 - * Wheels/Lock: 4 locking wheels with brake, 100 mm diameter
 - * Trolley weight: 12 Kg
 - * Loading capacity: 20 Kg
 - * Main assembly: Aluminium
 - * Base diameter 630 mm
 - * Colour: Ral 9016 White
 - * Certificates comply with : IEC60601-1: 2012 (Edition 3)
 - * CE/Rohs compliant
 - * Fully recyclable
 - * 10 year warranty
 - * Wide range of accessories
 - * For faster and easier cleaning
 - * Simple and lightweight design
 - * Supplied fully assembled with minimal packaging
 - * Made in Europe (MCC John Gough design and development)
- * * We can also make custom-made trolleys according to your needs and in your hospital's colours as an option



WorkiMed Light Cart for Screen

Cleaning procedure

1. The trolley can be cleaned with most mild, non-abrasive solutions commonly used in hospitals (e.g. dilute bleach, ammonia or alcohol solutions).
2. The surface finish will be permanently damaged by strong chemicals and solvents such as acetone and trichloroethylene.
3. Do not use steel wool or other abrasive materials to clean the mounting assembly.
4. Damage caused by the use of unapproved substances or processes will not be covered by the warranty. We recommend that you test any cleaning solution on a small area that is not visible to check for compatibility.
5. Immediately wipe off any cleaning agent on the arm with a cloth dampened with water.
6. Dry the trolley thoroughly after cleaning.

CAUTION: WorkiWay SRL makes no claims regarding the effectiveness of the chemicals or processes listed as a means of infection control.

Consult your hospital infection control officer or epidemiologist. To clean or sterilize mounted instruments or accessories, refer to the specific instructions provided with those products.

